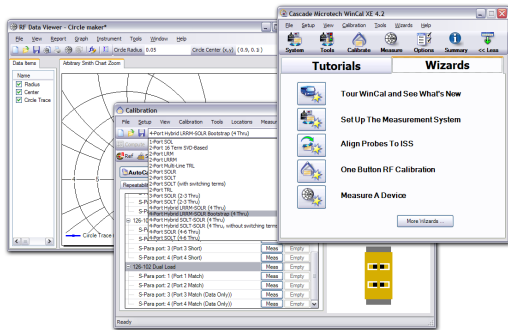


Cascade Microtech, Inc.

SPECIFICATION SHEET



Extremely powerful, easy-to-use software tools provide faster & more accurate RF measurement results

WinCal XE

High-Performance, RF Measurement Software

By design, Cascade Microtech's WinCal XE™ software provides unprecedented ease-of-use and delivers valuable productivity gains to the complex task of conducting RF measurements. Right from the start, WinCal XE features a guided system setup complete with customizable Wizards to ensure fast and easy access to reliable VNA calibration and repeatable data. Automated and intelligent functions minimize operator errors and troubleshooting time, resulting in trustworthy results and higher productivity. WinCal XE features include exclusive 2-, 3-, and 4-port calibration algorithms, immediate and live data reduction and viewing, eLRRM, hybrid, and NIST style multi-line TRL calibrations, plus an Error Set Management capability for data comparison and augmentation. For all levels of experience with RF measurements, WinCal XE makes easy work of enjoying the advanced performance you'll need to ensure world-class RF measurement capabilities.

FEATURES

- Automatic VNA calibration accommodates your calibration method of choice
- Extensive guidance facilitates correct system setup and calibration
- S-parameters can be converted to a device-appropriate or preferred format
- Display templates and Wizards can be customized for your particular needs
- LRRM-SOLT Hybrid 4-port calibrations enable precision 4-port calibrations
- Error Set Manager provides error-set augmentation and error-set comparison tools
- Multi-line TRL cal compares your preferred calibration methods to a NIST style calibration
- Second-tier calibration capability simplifies mixed-connector/probe-tip reference plane calibration
- ISS management allows marking of individual sites or groups as good or bad, adding confidence to your calibrations

COMPATIBLE SYSTEM CONFIGURATIONS

- Semi-automatic probe station with optional programmable positioners and VNA
- Manual probe station with VNA
- Virtual mode – simulated VNA, with manual or semi-automatic probe station

COMPATIBLE COMPONENTS OF SYSTEM

VNA

Wafer probing system

Power supplies

Probes, cables and other measurement accessories

Measurement software (e.g., IC-CAP, Wavevue)

VNA SUPPORT

SUPPORTED VNAs	TESTED MODELS AND FIRMWARE VERSION (FW)
Agilent 8510C	8510C - 7.14, 7.16, 8.10 (8510B is NOT supported)
Agilent PNA	2-port FW 4.x (limited legacy driver only) 2-port FW 5.x, 6.x or 7.x 4-port FW 5.x, 6.x or 7.x (7.50.32, or later, required for advanced calcs in 4-port mode)
Agilent ENA	ENA-L is NOT supported ENA-B, ENA-C, FW 6.01 or later ENA-B needs FOM option for advanced calibrations
Agilent	8719, 8720, 8722, 8753 FW 6.x or later
Anritsu Lightning	37xxx-series 2-port, FW 5.03 or later
Anritsu Scorpion	MSxxx-series 2-, 3- or 4-port, FW TA2.03 Sensor-only ports will not be calibrated
Rohde & Schwarz	ZVA, ZVB FW 2.02 or later

WinCal XE should work with all models similar to those tested.

SYSTEM REQUIREMENTS

Minimum requirements	1 GHz CPU 512 MB RAM, 1 GB for Vista 5 GB Hard Disk space available 1024x768 display resolution and medium color quality (16-bit) Windows 2000 (Service Pack 4), or Windows XP (Service Pack 2) or Windows Vista (32-bit only)
Semi-automatic probe station control requirements	Nucleus 3.2 or later
GPIB connected VNA and/or probe station requirements	National Instruments driver 2.2* or later (The VISA library is not required) Agilent driver M1.0* or later (VISA version must be installed, which is also the default)
Network connected VNA (COM over LAN) requirements	Standard Ethernet connection Setup LAN communication according to the VNA vendor's instructions
Tutorials requirements	Internet Explorer 6.0 or later Windows Media Player 9.0 or later (may work with older, but not tested) Flash Player add-on to Internet Explorer (if not already included) Sound card and speakers
Recommended requirements for optimal performance	A modern, high-performance CPU (Clock speed is no longer the only measure, but a single-core CPU typically has a rating close to 3 GHz and a multicore CPU from 1.5-3 GHz) 2 GB RAM or more 1280x1024 display resolution or better, high color quality (32-bit) Three-button or scroll-wheel mouse to enable panning in RF Data Viewer graphs

* No support given on systems with old drivers, since free upgrades are available from vendor.
A warning is displayed at runtime if an older driver is found, but WinCal will still attempt to use the driver.

ORDERING INFORMATION

PART NUMBER	DESCRIPTION
142-171	WinCal XE, full version (USB)
142-173	WinCal XE, 30-day demo (USB)
142-178	WinCal XE, field upgrade (from demo to full version)

ISS SUPPORT

PART NUMBER	DESCRIPTION
101-190	LRM, GSG
103-726	GS, 100-250 μ m
104-783	W-band, GSG, 75-150 μ m
106-682	Wide pitch, GSG
106-683	Wide pitch, GS, SG
109-531	Right angle, GSG, 100-400 μ m pitch
114-456	ACP-RC, 100-150 μ m
126-102	Dual/Differential, GSGSG, GSGS,SGSG, SGS, 150 μ m
129-239	Dual/Differential, GSGSG, GSGS,SGSG, SGS, 100-125 μ m
129-240	Dual/Differential, GSGSG, GSGS, SGSG, SGS, 150-225 μ m
129-241	Dual/Differential, GSGSG, GSGS, SGSG, SGS, 250 μ m
129-246	Dual/Differential, GSSG, GSS, SSG, GS, 100-150 μ m
129-247	Dual/Differential, GSSG, GSS, SSG, GS, 175-250 μ m
129-248	General Purpose Thru, GSGSG (300-650 μ m), GSSG (300-950 μ m)
129-249	General Purpose Thru, GSGSG (700-1250 μ m), GSSG (1000-1250 μ m)
138-356	mmWave ready (220 GHz), GSG, 50-75 μ m
138-357	mmWave ready (220 GHz), GSG, 100-150 μ m
User-defined sites	Custom calibration sites are supported through the powerful Location Manager function

© Copyright 2009 Cascade Microtech, Inc.
All rights reserved. No part of this document may be reproduced or transmitted in any form or by any means, electronic or mechanical, including photocopy, recording, or any information storage and retrieval system, without permission in writing from Cascade Microtech, Inc.

Data subject to change without notice

WINCAL-SS-0209

Cascade Microtech, Inc.
toll free: +1-800-550-3279
phone: +1-503-601-1000
email: cmi_sales@cmicro.com

Cascade Microtech GmbH
phone: +49-811-60005-0
email: cmg_sales@cmicro.com

Cascade Microtech Japan
phone: +81-3-5615-5150
email: cmj_sales@cmicro.com

Cascade Microtech Shanghai
phone: +86-21-3330-3188
email: cmc_sales@cmicro.com

Cascade Microtech Singapore
phone: +65-6873-7482
email: cms_sales@cmicro.com

Cascade Microtech Taiwan
phone: +886-3-5722810
email: cmt_sales@cmicro.com

www.cascademicrotech.com

